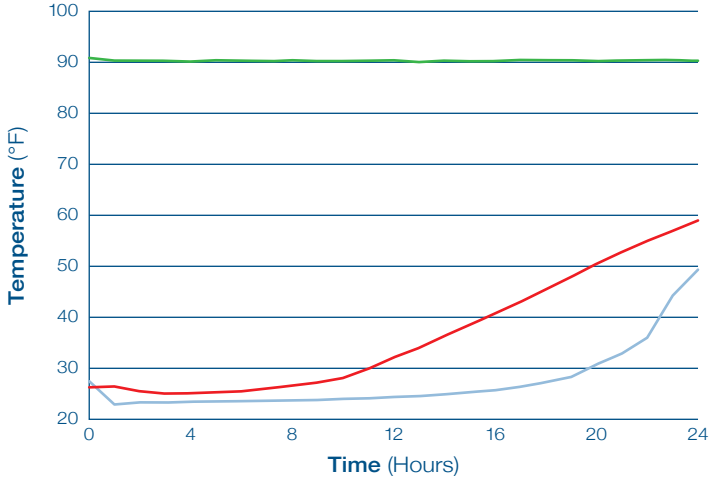


Cold Chain Packaging Products

Protecting your temperature-sensitive shipments



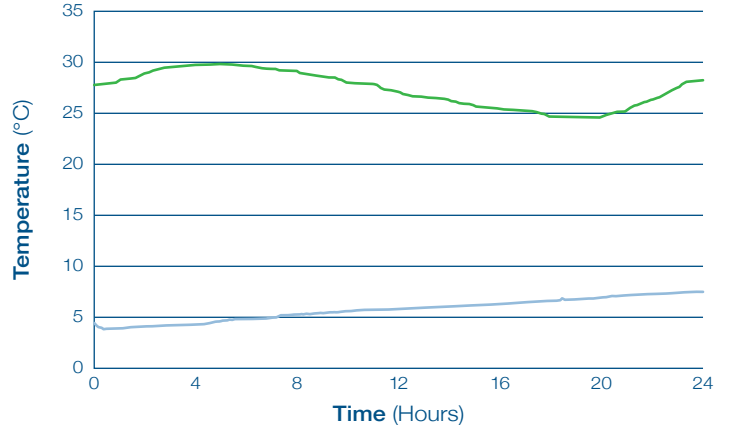
24 Hour Thermal Test



Test Details

Contents: 1 lb. of gourmet chocolate
 Box ID: 8" x 8" x 8"
 Coolant: (2) 24 oz. frozen gel packs
 Ambient: 90° F constant
 Insulation: 1/2" nominal EPS foam sheet on all (6) sides
 CoolPAC reflective bubble box liner

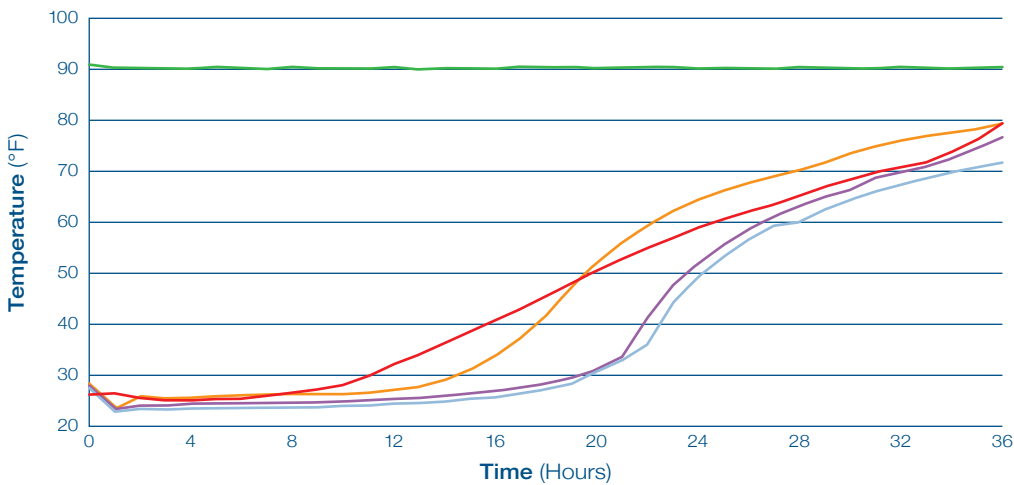
ISTA 7E Heat 24 Hour



Test Details

Contents: 1 oz. liquid solution placed in small inner box
 Box ID: 9" x 7" x 8"
 Coolant: (3) 16 oz. frozen gel packs
 Ambient: ISTA 7E Heat
 Insulation: CoolPAC reflective bubble box liner

36 Hour Thermal Test



Test Details

Contents: 1 lb. of gourmet chocolate
 Box ID: 8" x 8" x 8"
 Coolant: (2) 24 oz. frozen gel packs
 Ambient: 90° F constant
 Insulation: 1/2" nominal EPS foam sheet on all (6) sides
 CoolPAC reflective bubble box liner



PAC
 WORLDWIDE
 Protecting The Things People Care About™



Visit us at www.pac.com or email: info@pac.com