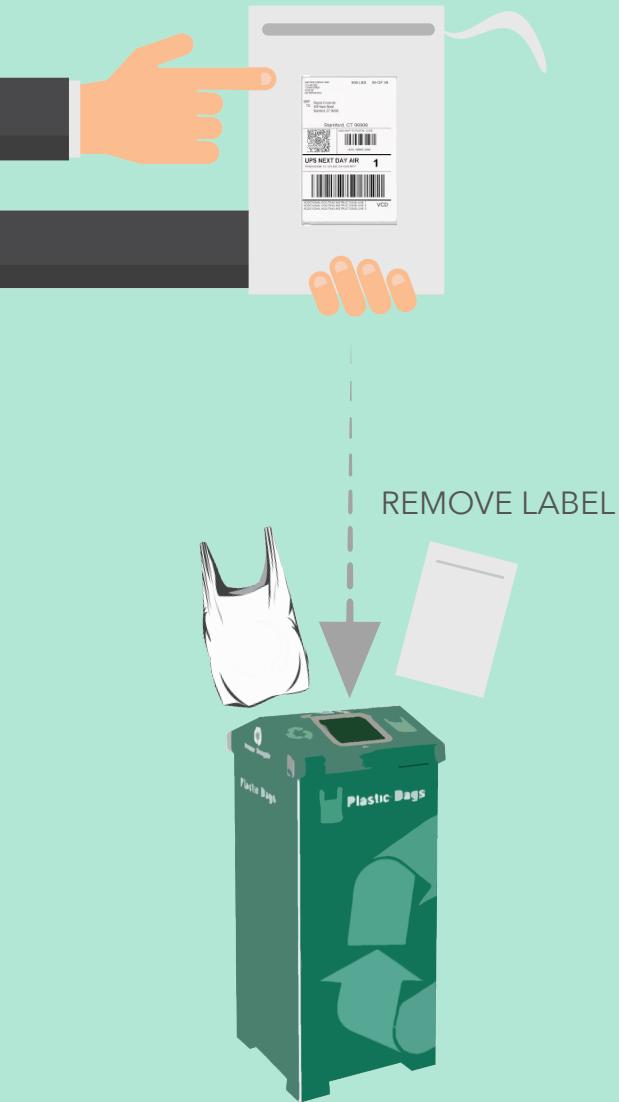


RECYCLE YOUR USED MAILERS WITH OTHER PLASTIC FILMS



GROCERY STORE PLASTIC BAG
RECYCLING BINS WILL ACCEPT
#2 AND #4 CODE POLY MAILERS

HOW TO KNOW IF YOUR MAILER IS 100% RECYCLABLE

POLY MAILERS WITH THE
#2 AND/OR #4 PLASTIC
CODES ARE RECYCLABLE
WITH OTHER PLASTIC
FILMS



IF YOU SEE THIS
HOW2RECYCLE LABEL
PRINTED ON YOUR
MAILER, YOU CAN
GUARANTEE IT IS
RECYCLABLE

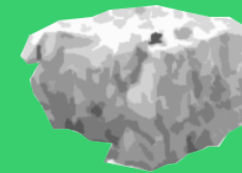


VISIT HOW2RECYCLE.INFO FOR DETAILS

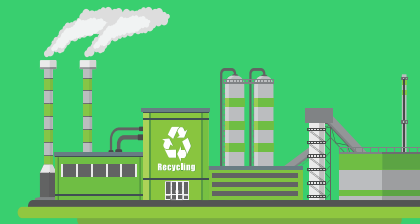
WHAT HAPPENS WHEN YOUR MAILER IS RECYCLED



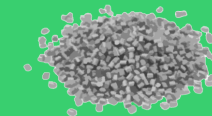
PLASTIC IS COLLECTED
FROM THE STORE AND
BALED



IT'S TRANSPORTED
TO SPECIALISED
RECYCLING FACILITIES

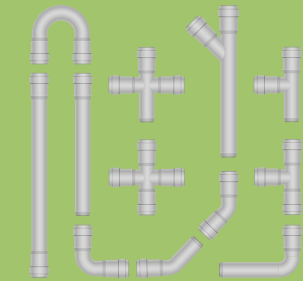


PLASTIC IS SORTED,
CLEANED, AND
PROCESSED INTO
RECYCLED PELLETS



RECYCLED PLASTIC CAN BE MADE INTO NEW THINGS SUCH AS

COMPOSITE
DECKING



WATER
PIPES

FURNITURE



NEW TRASH LINERS

